

## RFQ Guidelines

This guideline will assist you to provide/attach the adequate information required for us to prepare the necessary quotation promptly.

---

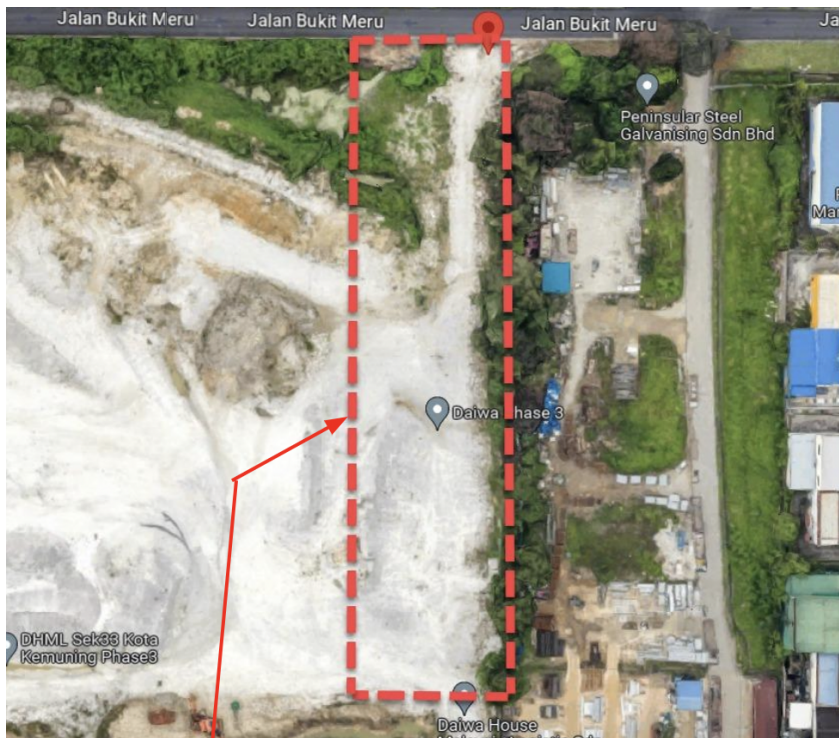
### **Type A - Detection of Mass Area**

**Step 1:** Let us know the detection limit you require

**Step 2:** Include the detection width, length and total area in meter/m<sup>2</sup>

**Step 3:** Would be good if you could described the nature of work you will be doing (eg. Hdd, open cut for cable laying, piling, SI works, etc.)

**Step 4:** Share the location of works



**Detection Area : 6,400m<sup>2</sup>  
(160m Length x 40m Width)**

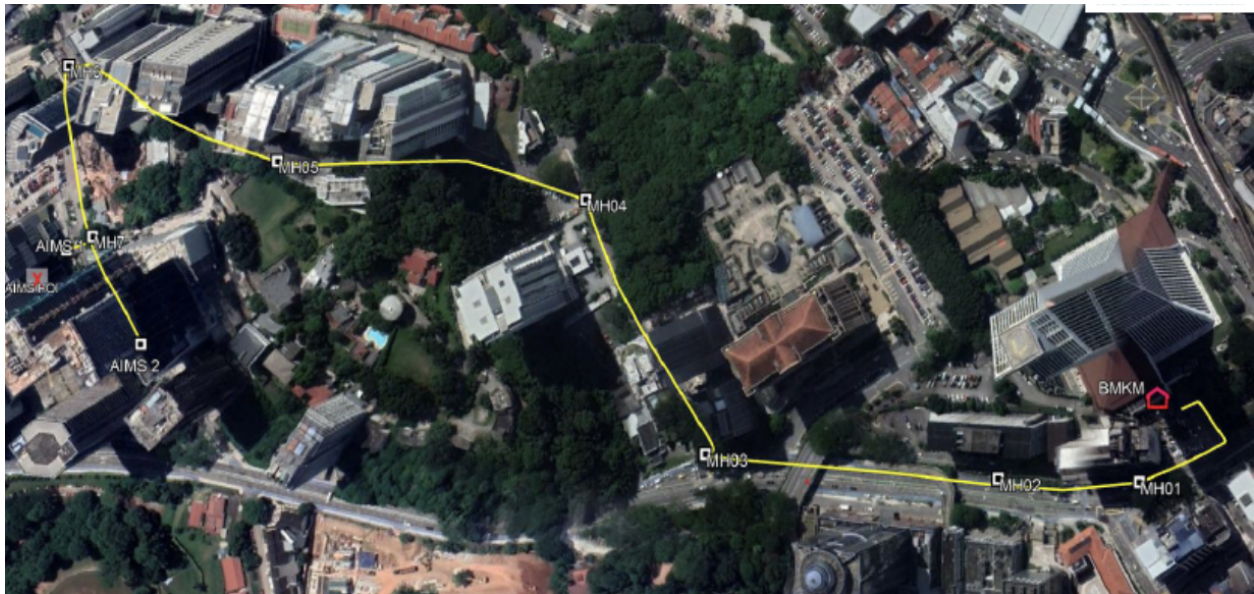
**Type B - Detection Along Roads**

**Step 1:** Let us know the alignment of your infrastructure works

**Step 2:** Include the length and width in meter

**Step 3:** Would be good if you could described the nature of work you will be doing (eg. Hdd, open cut for cable laying, piling, SI works, etc.)

**Step 4:** Share the location of works



**Detection Area : 6,305m<sup>2</sup>  
(1,261m Length x 5m Width)**